



**ENHANCED!**



# Lumina Technical Sheet

Now includes flash memory for easy firmware updates and five serial ports.



## DESCRIPTION

The Lumina is a central lighting and automation controller. Lumina provides elegance and convenience to any new or existing home. Its unrivaled feature set and expansion options can make it a comprehensive smart home system.

The system provides enhanced comfort, safety, convenience and energy savings by coordinating audio, lighting, heating and air, scenes and messaging based on activity and schedules.

The Lumina has an astronomical clock and automatically adjusts for daylight savings time in order to provide accurate dusk to dawn lighting control.

The Lumina supports HAI Lighting Control (HLC) products, which include dimmers, switches, remote controls, and plug-in modules. It can operate lighting devices by other manufacturers, including Z-Wave™ based devices, Zigbee®, ALC hardwire, RF, hardwired, and others provided by HAI Connectivity Partners.

Using HAI temperature and humidity sensors allow for temperature-based programming of events in your Lumina system. They may be used to activate programs for controlling temperatures in attics, garages, greenhouses, basements, wine cellars, or coolers.



## WHOLE HOME AUDIO

The Lumina may be interfaced with a Hi-Fi by HAI whole home audio system.



Lumina systems can control on/off, volume, muting, audio source, and many other functions for each audio zone.

Use the telephone to make an announcement through Hi-Fi by HAI, such as calling the kids downstairs for dinner.



## LIGHTING

A Lumina system can control your home lighting by schedule, motion detection, door openings, sunrise, sunset, alarm activation and more. It provides the benefits of a sophisticated lighting control system by setting scenes, fades, and dimming levels.



## ENERGY MANAGEMENT

If you add HAI's Omnistat communicating thermostats, you may control your home's temperatures through your Lumina system by schedule and activity such as home, asleep, away, room occupancy, outdoor temperature, etc.





## SECURITY

If desired, a Lumina controller can be integrated with a security panel to allow for security activated and emergency lighting, and temperature control. See HAI Connectivity Partners, <http://www.homeauto.com/partners> for exact models.



## SURVEILLANCE

Surveillance cameras may be added to Lumina systems.



View and/or record the nursery, pool area, or front door. Automatically display live video feed on a Touchscreen or television when the doorbell rings.

View live feed or recorded video remotely over the Internet or from your Smartphone/PDA. Activate video recording when an alarm trips, and send an alert to a cell phone or e-mail address stating that an alarm has been tripped.



## INTERFACE OPTIONS

Each Lumina installation requires at least one Lumina Keypad (HAI part number 33A00-19) or Lumina Keypad with Built-In Speaker/Mic (HAI part number 33A00-20).

You may add additional interface options such as an OmniTouch Touchscreen, to your HAI system. OmniTouch Touchscreens are available as wireless versions, as well as in-wall versions. These colorful, easy-to-use Touchscreens allow complete control of an HAI system.



The Lumina Mode Switch allows you to change the mode of your Lumina home control system with the touch of one button.

Changing modes adjust lighting, temperatures, audio and more just the way you like them.

Your Lumina system has optional telephone access with voice menu that you may access when you are inside or outside your home. The telephone access also allows your home to contact you in case of event change. It also has a built-in modem that allows remote programming and status review, which is available over the internet using the Ethernet port.



Choose from one of HAI's award-winning software options, such as Internet access and control with Snap-Link, Web-Link II, or Home Control for Windows® Media Center.



## ACCESSORIES


HAI offers a full line of accessories for Home & Lighting Control, Energy Management, Whole Home Audio, and Interface Options. Accessories may be added at the time of initial installation or later as needs change.



HAI has a line of wireless sensors to monitor doors, windows, and motion. Sensors may be used for activation of automation features, such as occupancy-based lighting or other functions. HAI also makes a four-button keyfob to control the functions of the Lumina.

Adding an optional Two-Way Voice Module to your Lumina allows it to make announcements by working in conjunction with the speakers located in a console/keypad or with a speaker/microphone module. For example, you can have your Lumina remind you every Wednesday night at 8:00 pm that tonight is trash night.



 <b>LUMINA SPECS</b>	
Rooms	8
Loads (lights)	64
House Status Switches	8
Max Keypads*	8
Max OmniTouch 5.7**	7
Thermostats	4
Audio Control	Yes
Flash Memory	Yes
Inputs (with expansion)	16 (48)
Outputs (with expansion)	10
Ethernet Port	Yes
Serial Ports (w/ expansion)***	5 (6)
Programming Lines	500
Vocabulary	550
Customizable Vocabulary	No
Depluggable Terminal Strips	Yes
Num. of 16 Zone Hardwire Expanders (10A06-1) Supported	2
Num. of 64 Zone Wireless Receivers (45A00-1 or 45A00-1) Supported****	1
Warranty	2 years

\* Each OmniTouch 5.7 Touchscreen uses one keypad address.

\*\* Recommend 32A30 Touchscreen Hub for 3 or more OmniTouch 5.7 Touchscreens.

\*\*\* One serial port used for UPB™ Powerline Interface Module.

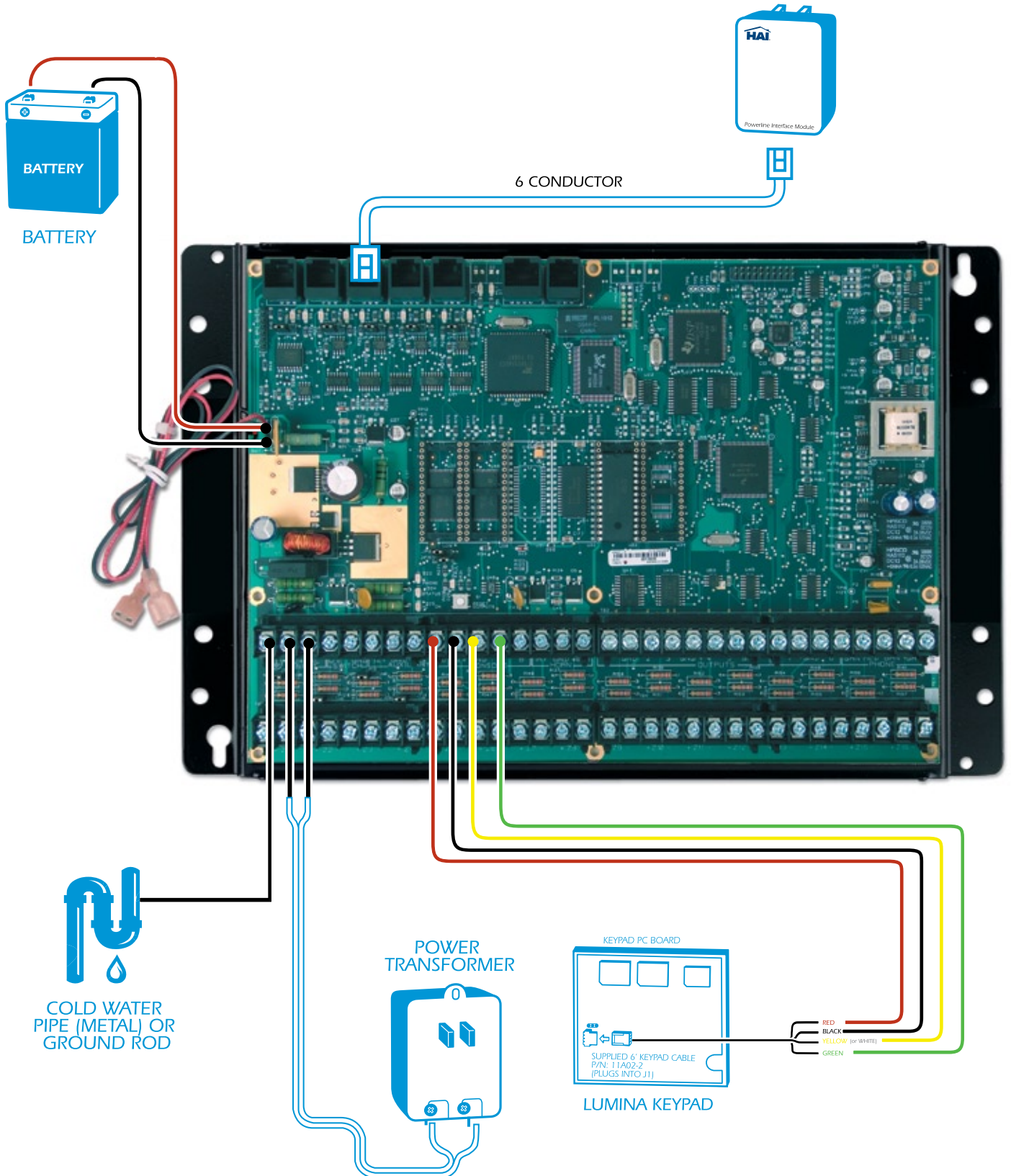
\*\*\*\* Wireless Receivers can support 64 Transmitters and can report to 16, 32, 48, or 64 zones, depending upon your setup. Each group of 16 zones counts as one expansion enclosure.

# Lumina Controller

In enclosure

44A00-1

POWERLINE  
INTERFACE  
MODULE



## Lumina Parts List

<b>CONTROLLERS</b> Description	Part #	<b>ACCESSORIES</b> Description	Part #
Lumina	<b>44A00-1</b>	RS-232/RS-485 Serial Board	<b>10A17-1</b>
 <p>Lumina (44A00-1) comes with everything you need to get started with sophisticated lighting control. It includes a Lumina home control system with enclosure, lock set with two keys, Lumina Keypad, PIM &amp; cable, phase coupler, serial cable, transformer &amp; battery, manuals, and accessories. All you need to add are the HAI switches for the electrical loads you wish to control.</p>		Two-Way Voice Module	<b>10A11-1</b>
		Lumina Chip Upgrade Version X.X	<b>20A04-21UPG</b>
		Lumina Keypad	<b>33A00-19</b>
		Lumina Keypad with Built-in Speaker/Microphone	<b>33A00-20</b>
		Telephone Access Kit	<b>44A01-1</b>
		Lumina Mode Switch	<b>38A00-3</b>
		16 Zone Hardwire expander	<b>10A06-1</b>
		4 Relay Module	<b>10A07-1</b>
		8 Relay Module	<b>19A00-1</b>
		Universal Mounting Plate	<b>20A07-2</b>
		Two-Way X-10 Transceiver Kit	<b>10A09-7</b>
		12V 5AH Battery	<b>44A02-1</b>
		40VA 24V Transformer	<b>44A03-1</b>